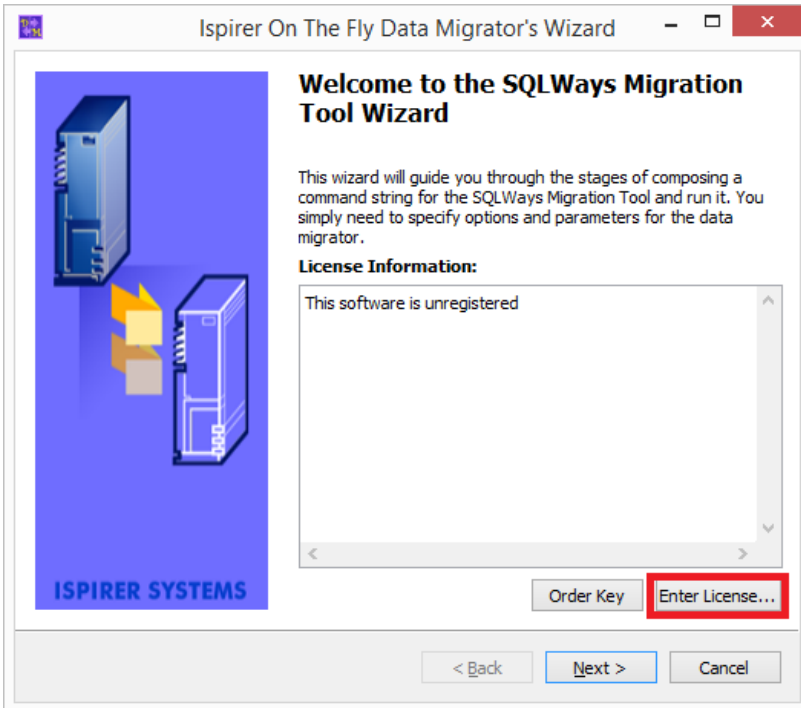
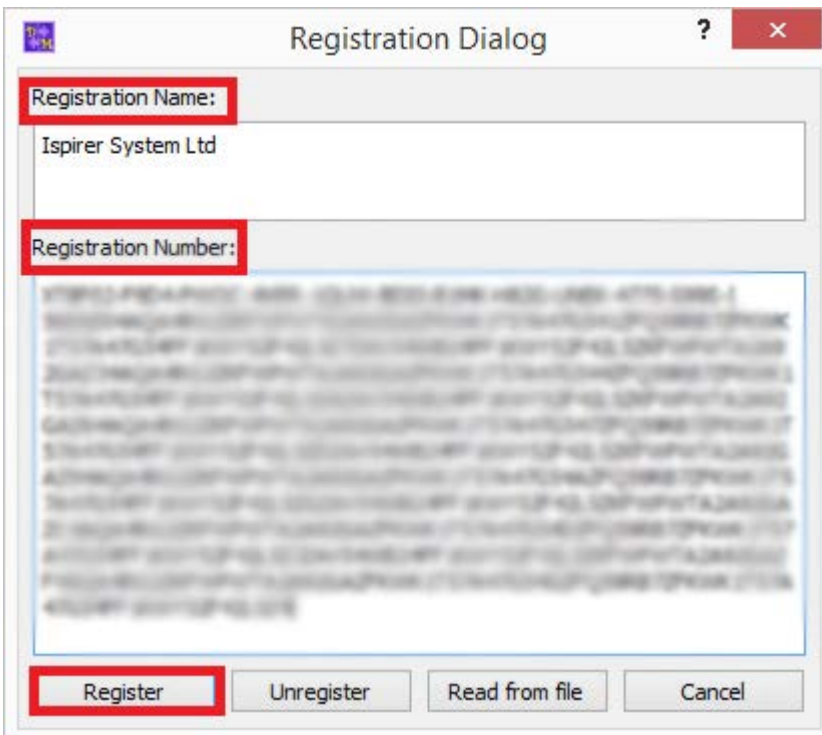


OnTheFlyDataMigrator User's Guide

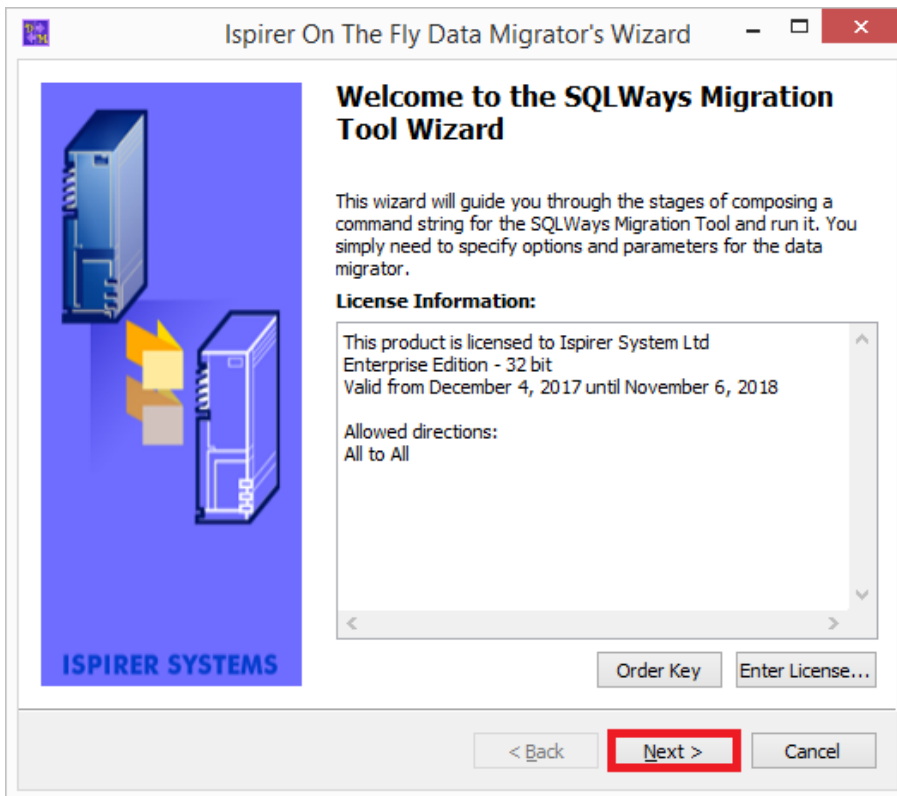
1. Click «Enter License» to enter the licensing information.



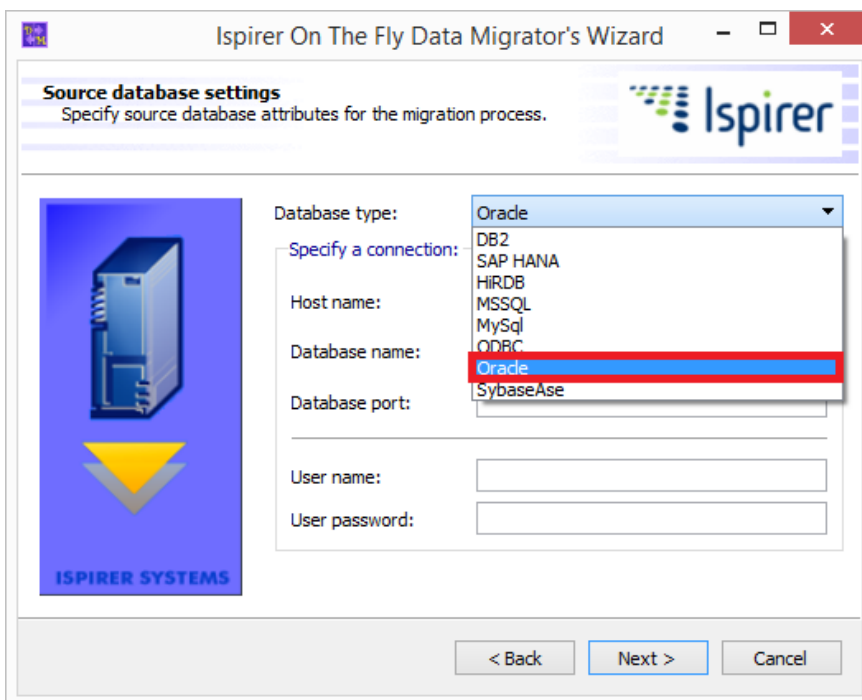
2. After entering the licensing information, click «Register»:



3. The registered tool looks the following way:



4. Click «Next» and choose the source database from the drop-down list:



After choosing the source database, enter the connection information and click «Next»:

Ispirer On The Fly Data Migrator's Wizard

Source database settings
Specify source database attributes for the migration process.

Database type: Oracle

Specify a connection:

Host name: vmdbsr002

Database name: XE

Database port:

User name: ispirer

User password:

< Back Next > Cancel

*If the database port is not default, specify the information about it in the "Database Port" option.

5. Choose the target database and enter the connection information. It is also necessary to create the text file with the list of the tables, the data from which you need to migrate, and specify the path to it in the «Tablelist file»:

Ispirer On The Fly Data Migrator's Wizard

Migration options
Specify migration options, export files directory and a trace level.

Target DB: PostgreSQL

Host name: vmdbsrvudm001

Database name: postgres

Database port:

User name: postgres

User password:

Template: *

Tablelist file: C:/OnTheFlyDataMigrator 8.0/Export/TableList.txt

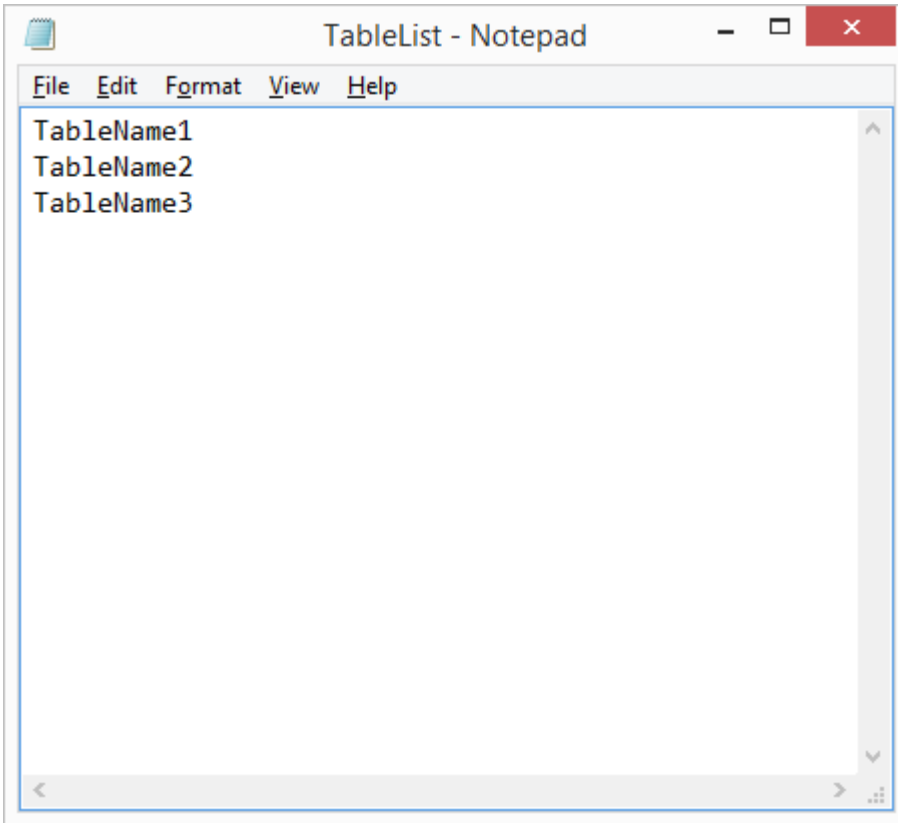
Export path: C:/Users/dmitriy.susha/My Documents/Ispirer/OnT

Trace level: 0 (for saving log)

Show summary page

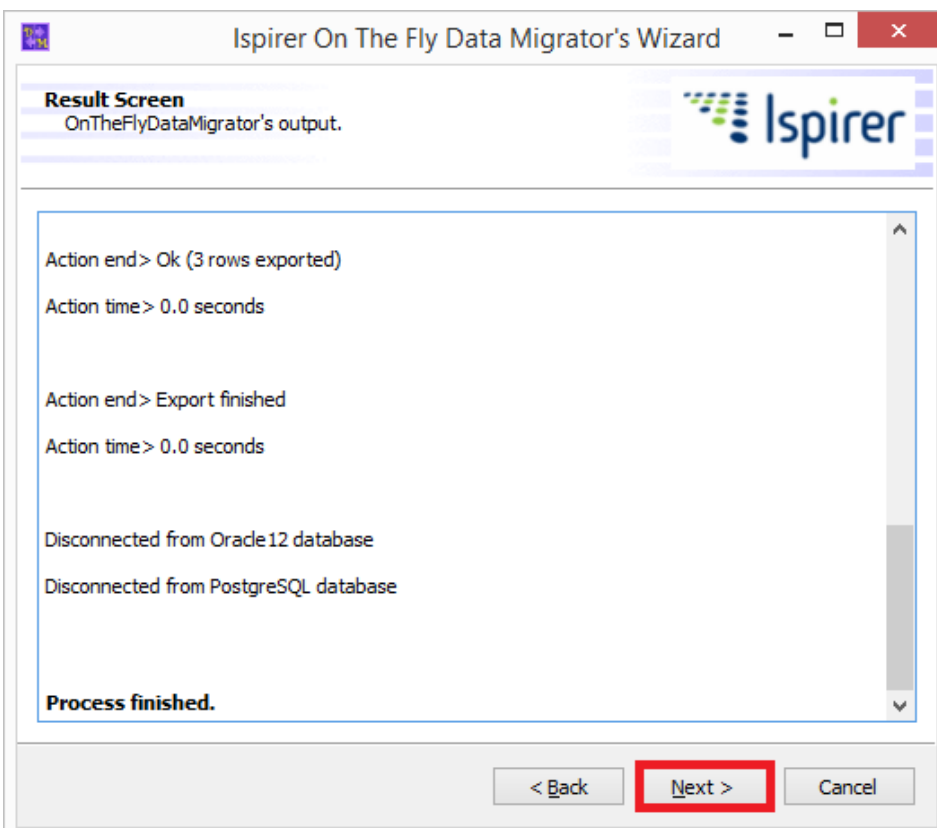
< Back Next > Cancel

«Tablelist file» looks the following way:

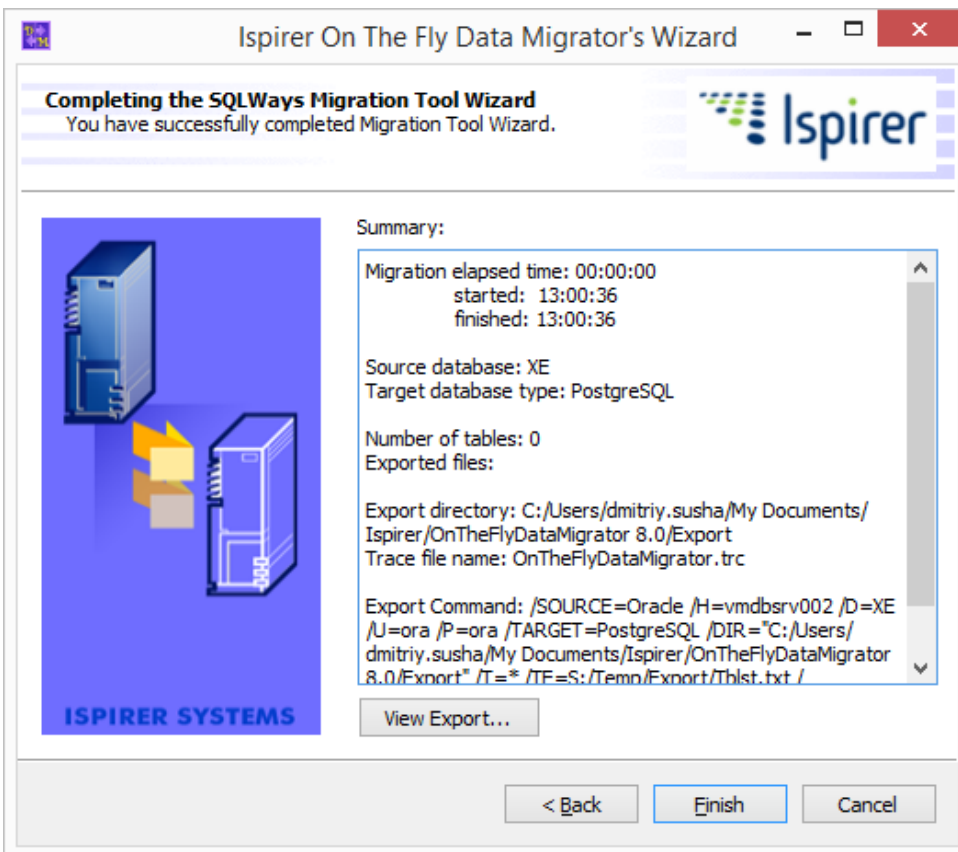


Click «Next» and the migration process will be started automatically.

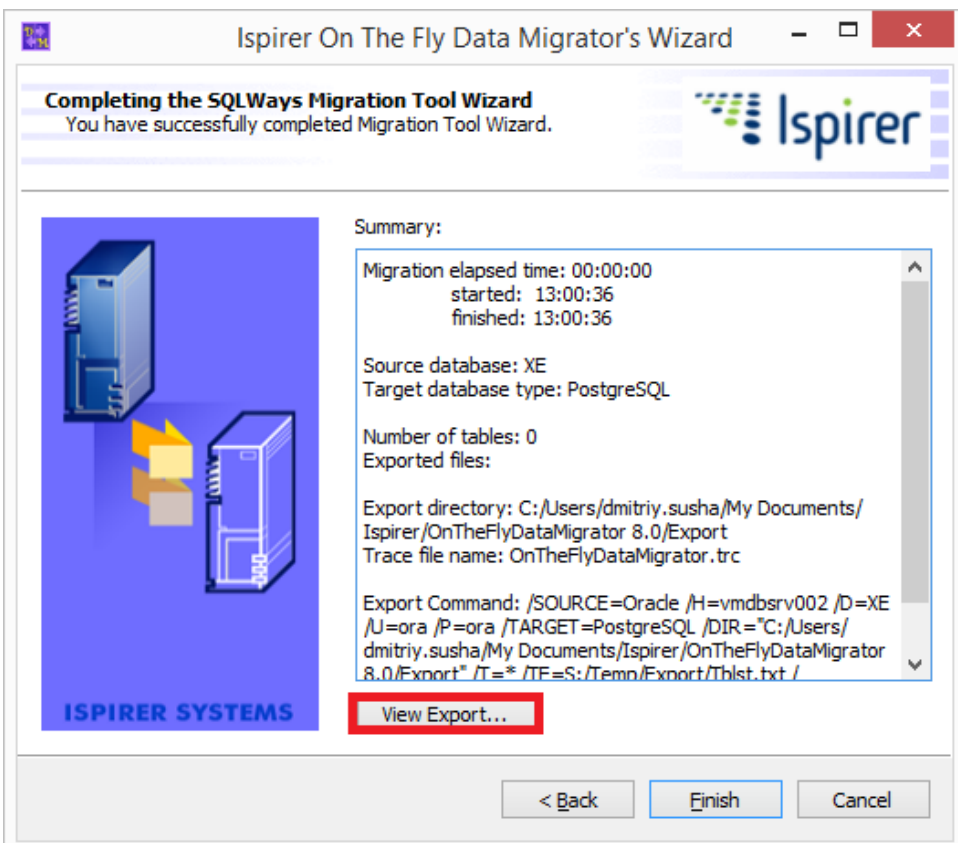
6. After finishing of the migration process, the following window will appear:



Click «Next» to see the window with the summary information:



If during the migration process you have encountered any errors, you are welcome to send us the trace file for analysis. Click «View Export» to go to the export directory, where the trace file is located.



Note:

1. OnTheFlyDataMigrator migrates only data, so the tables must be created in the target database before running the tool.
2. To avoid errors of data integrity, FOREIGN KEY Constraints and Triggers must be disabled in the target database before running the tool. After successful data migration they can be enabled again.
3. To achieve a higher migration speed, we recommend to disable all the Constraints in the target database while OnTheFlyDataMigrator is working, and also to start migration in several streams by running multiple copies of OnTheFlyDataMigrator, preliminary having broken Tablelist file in some separate files-parts.